

The digestive physically and chemically breaks down food so that it can be absorbed into our bloodstream. Any food that does not get absorbed is excreted as faeces.

## Labels

Mouth	Salivary glands
Liver	Oesophagus
Stomach	Large intestine
Colon	Small intestine
Anus	Alimentary canal
Gall bladder	

## Research Ideas

- What is the function of saliva?
- How long does it take food to be digested?
- Which organ produces bile, and what is its function?
- Digestion of food is both a physical and chemical process. Name two examples of each.
- How does digested food pass into our blood?

## Advanced Research

- How long is the alimentary canal?
- What is cholera? Describe its effects on the body.
- Describe the treatment for 'twisted bowel'.
- Outline the causes and treatment of ulcers in the digestive system.

## Internet Search Terms

(we recommend "google.com")

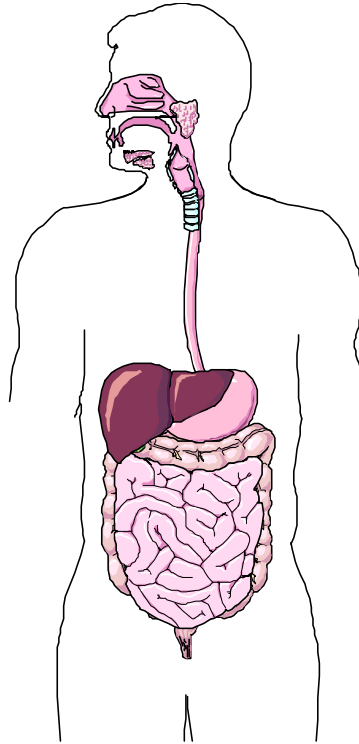
- "food takes" + hours + digested
- digestion + "salivary amylase"
- food + absorption
- "digestive system"
- bile + function + production

## Websites

- <http://www.alternativehealthtalk.com/anatomy.htm>
- [http://en.wikipedia.org/wiki/Gastrointestinal\\_tract](http://en.wikipedia.org/wiki/Gastrointestinal_tract)
- [http://en.wikipedia.org/wiki/Digestive\\_system](http://en.wikipedia.org/wiki/Digestive_system)
- <http://www.cdc.gov/travel/cholera.htm>
- <http://www.umm.edu/digest/ulcers.htm>
- <http://en.wikipedia.org/wiki/Stomach>

## Key Words

Saliva	Faeces
Digestion	Cholera
Bile	Absorption
Gall bladder	Bowel
Emulsify	Ulcer
Physical processes	
Chemical processes	



## Presentation Ideas

Design a wall display with diagrams and facts. Make sure your titles are big and bold, and that your work is as neat as possible.

Give a talk to your class. Prepare some diagrams (maybe on overheads) to help illustrate your presentation.