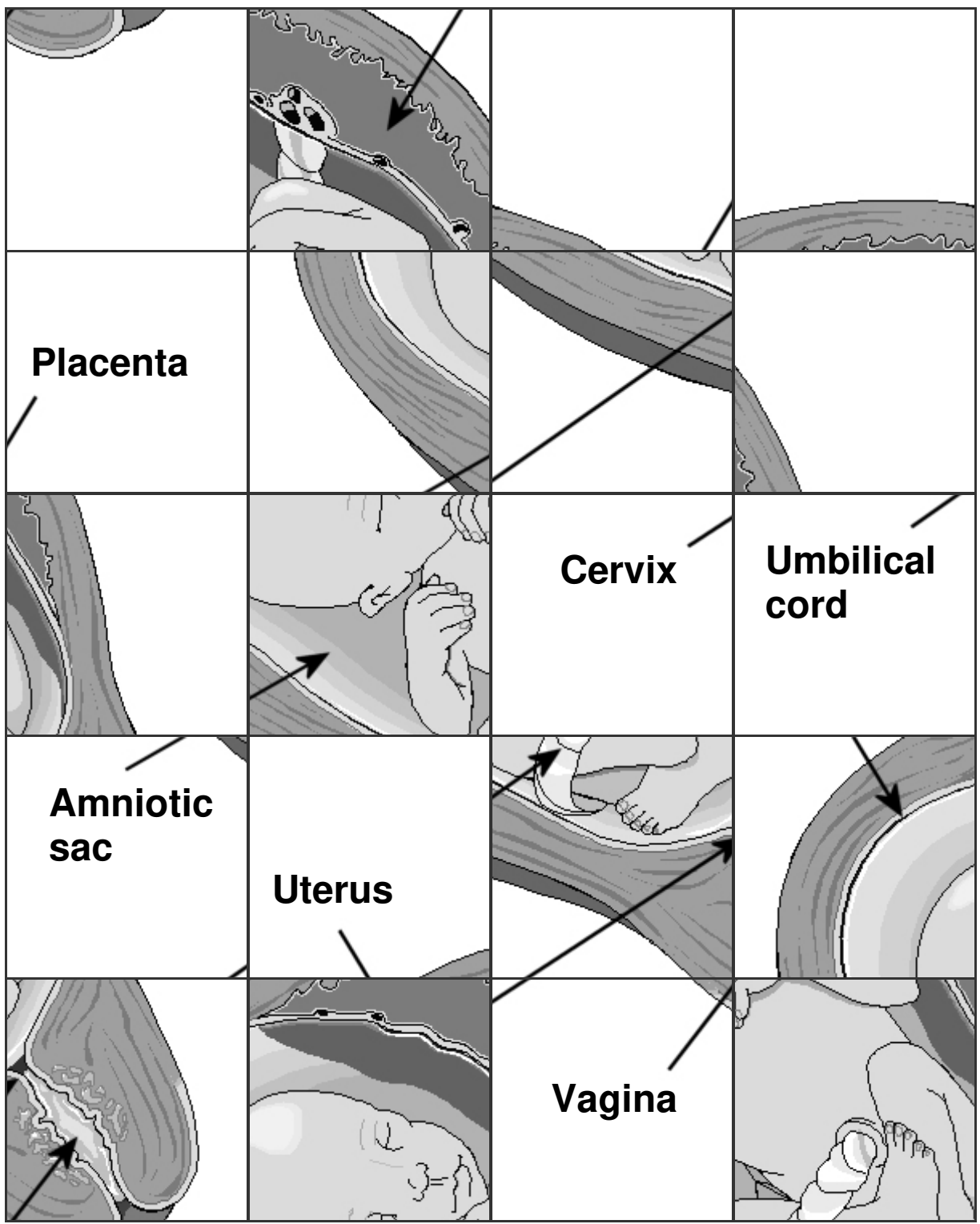
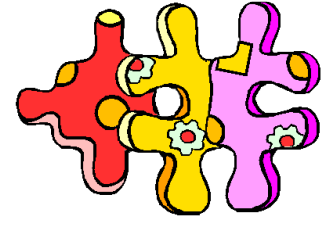


Pregnancy



Parts of the Body

- a. Cut out the picture of the torso and stick it on a new page in your book.
 b. Label the diagram using the words below.

Small Intestine

Large Intestine

Windpipe (Trachea)

Ball and socket joint

Lung

Stomach

Ribs

Collarbone

Humerus

Femur

Pelvis

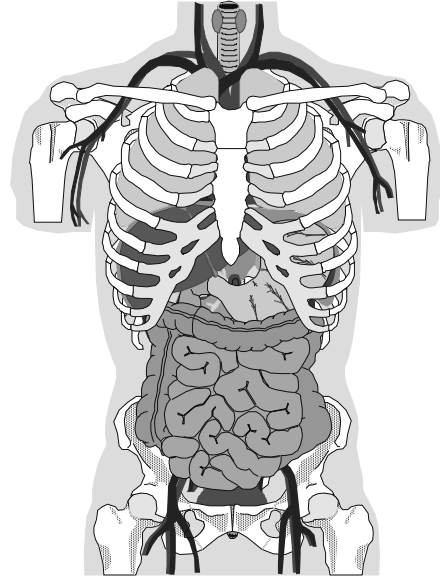
Liver

Bowel

Breastbone

Veins

Arteries



Functions

Identify the body part that matches each of these functions and descriptions.

This organ has a large number of functions including the production of bile and enzymes.	These protect the heart and lungs, and help with the breathing process.
This organ stores and mechanically churns food. Contains acid.	This carries air to and from our lungs.
This organ passes Oxygen into the blood and removes CO ₂ .	This allows two bones to move in relation to each other.
This organ absorbs digested food into the blood.	This stores solid waste until it is excreted.
The largest bone in the human body.	This is where water is absorbed into the blood.
These carry blood towards the heart.	These carry blood away from the heart.

